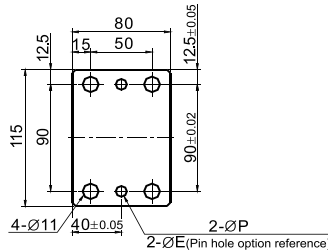
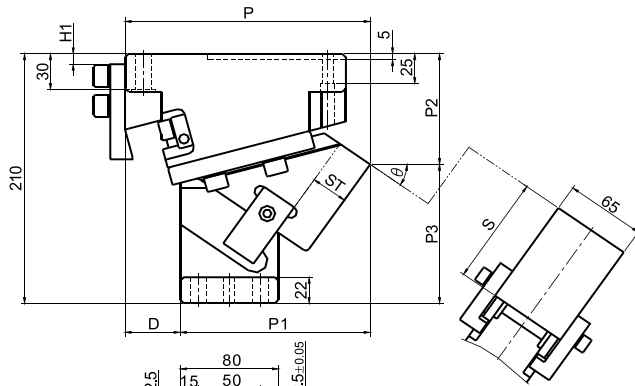
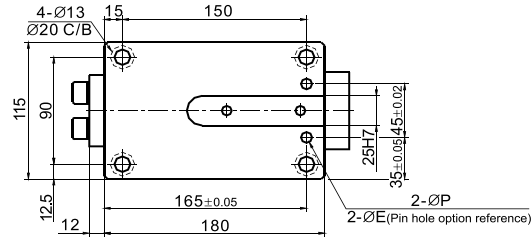




■ Mounting Method

- Blank : Prepared pin hole
- K : Positioned by the dedicated key for the 25 mm
- DK : Refer to below chart for Pin hole
- HK : Refer to below chart for pin table
- HDK : Refer to below chart for pin table

CSOUK 65

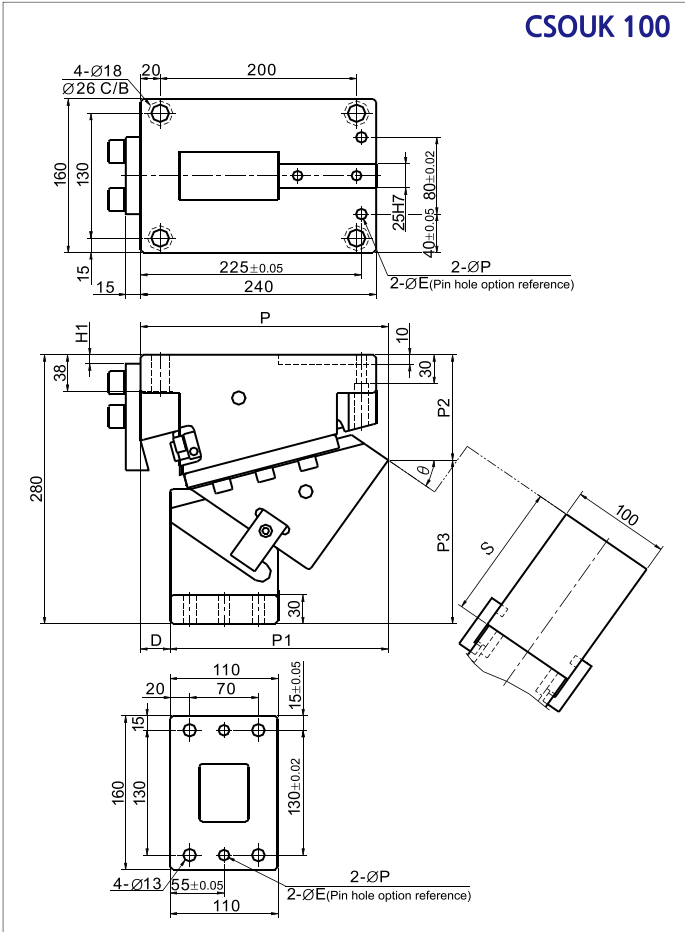


Catalog No.	Working Face (W)	Stroke	θ	P	P1	P2	P3	D	H1	S	ØP	ØE
CSOUK	65	26.9	0	185.94	110.94	56.57	153.43	75	55	80	9	10 12 13
		27.0	5	193.01	123.01	56.57	153.43	70	55	90		
		31.6	10	196.80	126.80	67.58	142.42	67	40	80		
		32.2	15	203.77	136.77	68.81	141.19		90			
		33.8	20	198.10	138.10	74.31	135.69	60	10	80		
		35.0	25	204.75	149.75	76.73	133.27	55		90		
		33.5	30	193.63	143.63	89.52	120.48	50		80		
		35.4	35	199.76	154.76	93.06	116.94	45		90		
		42.9	40	188.72	148.72	99.62	110.38	40		15		
		46.5	45	194.13	160.13	104.16	105.84	34	15	90		
		54.5	50	190.00	160.00	110.00	100.00	30	10	90		
		43.6	55	190.00	170.00	115.00	95.00	20	10	100		
		50.0	60	190.00	170.00	115.00	95.00	20	10	100		
		47.3	65	190.00	190.00	130.00	80.00	0	10	110		
		58.5	70	190.00	190.00	130.00	80.00	0	10	110		



Order CSOUK65-05-K
CSOUK65-10-HDK13-K

CSOUK 100



■ Mounting Method

- Blank : Prepared pin hole
- K : Positioned by the dedicated key for the 25 mm
- DK : Refer to below chart for Pin hole
- HK : Refer to below chart for pin table
- HDK : Refer to below chart for pin table

Catalog No.	Working Face (W)	Stroke	θ	P	P1	P2	P3	D	H1	S	$\varnothing P$	$\varnothing E$		
CSOUK	100	28.3	0	240.00	180.00	85.00	195.00	60	55	100	11	12 13		
		28.4	5	236.89	176.89	73.82	206.18			140				
		33.3	10	240.00	180.00	90.00	190.00			100				
		33.9	15	254.35	194.35	81.51	198.49	140						
		30.9	20	240.00	190.00	110.00	170.00	50	15	100				
		32.0	25	253.26	203.26	102.60	177.40	140						
		33.5	30	240.00	210.00	110.00	170.00	30		120				
		35.4	35	252.34	222.34	109.69	170.31			140				
		39.0	40	240.00	210.00	115.00	165.00			120				
		42.3	45	247.41	217.41	114.68	165.32	10		140				
		46.7	50	240.00	230.00	120.00	160.00						10	
		52.3	55		240.00	240.00	145.00						135.00	0
		60.0	60											
		47.3	65											
58.5	70													



Order CSOUK100-05-DK12
CSOUK100-30-HDK13-K



■ Mounting Method

Blank : Prepared pin hole

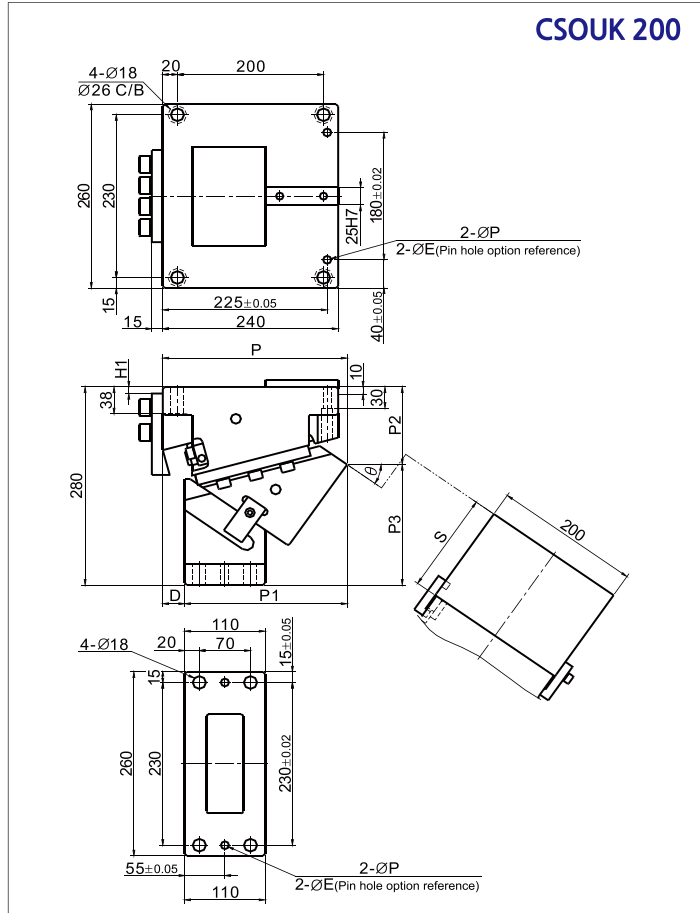
K : Positioned by the dedicated key for the 25 mm

DK : Refer to below chart for Pin hole

HK : Refer to below chart for pin table

HDK : Refer to below chart for pin table

CSOUK 200



Catalog No.	Working Face (W)	Stroke	θ	P	P1	P2	P3	D	H1	S	ØP	ØE
CSOUK	200	28.3	0	240.00	180.00	90.00	190.00	60	60	100	11	12 13
		28.4	5	236.82	176.82	78.84	201.16			130		
		33.3	10	240.00	180.00	90.00	190.00			100		
		33.9	15	254.35	194.35	81.51	198.49			130		
		30.9	20	240.00	190.00	110.00	170.00	50	15	100		
		32.0	25	253.27	203.27	102.60	177.40			130		
		33.5	30	240.00	210.00	110.00	170.00	30		120		
		35.4	35	252.34	222.34	109.69	170.31			140		
		39.0	40	240.00	210.00	115.00	165.00			120		
		42.3	45	247.41	217.41	114.68	165.32			140		
		46.7	50	240.00	230.00	120.00	160.00	10	10	140		
		52.3	55	240.00	240.00	145.00	135.00			140		
		60.0	60	240.00	240.00	145.00	135.00	0		140		
		47.3	65	240.00	240.00	145.00	135.00			140		
58.5	70	240.00	240.00	145.00	135.00	140						



Order CSOUK200-10-K
CSOUK200-20-HDK13-K