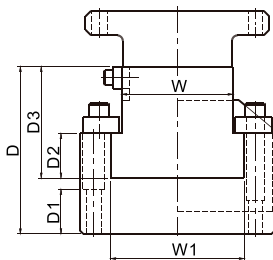
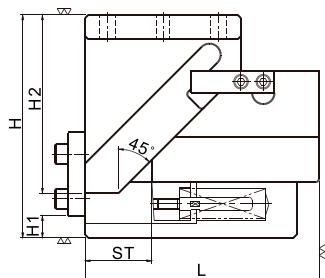
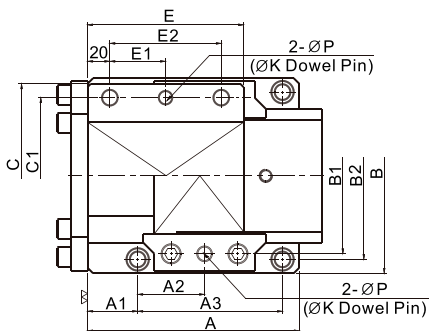


## CSKCA/CSKC 52~300



### Product Codes

CSKCA: Dowel pin hole finished  
CSKC: Dowel pin prepared hole

### Mounting Method

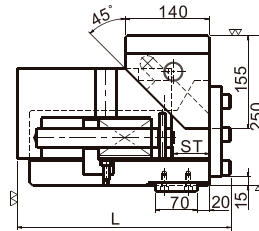
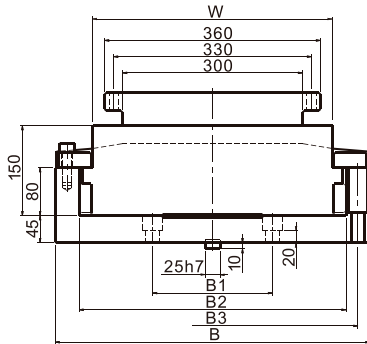
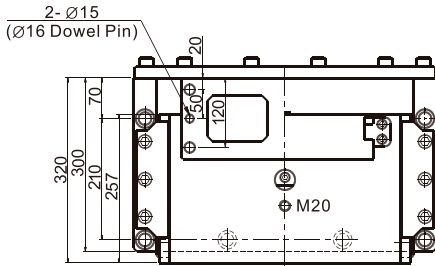
N : Pin hole (ØK H7)

Cataloge No.	Working Face Width	Stroke	B	L	H	D	D1	D2	D3	W1	H1	H2	A	A1	A2	A3	B1	B2	E	C	C1	E1	E2	P	K
CSKCA CSKC	52	25	98	120	140	100	35	25	65	65	15	90	120	30	40	80	80	80	98	80	20	40	7	8	
		40		135								50	95		90	25		50							
		60		180								25	140		110	35		70							
	65	40	130	140	160	115	40	30	70	80	25	110	145	30	50	100	105	105	100	130	105	30	60	9	10
		60		190								40	125		110	35		70							
	100	40	175	190	200	150	40	40	100	120	30	140	190	45	60	130	140	150	120	165	140	40	80	11	13
		60		210								160	190		140	50		100							
	150	40	260	190	220	170	60	40	100	180	45	140	190	45	60	125	210	220	120	230	200	40	80	15	16
		60		210								160	200		140	50		100							
	200	40	310	200	240	180	60	40	110	230	40	160	200	45	65	135	260	270	130	280	250	45	90	15	16
		60		220								180	210		150	55		110							
	250	40	360	210	270	210	60	50	130	280	50	170	200	45	60	135	310	320	140	330	300	50	100	15	16
		60		230								160	220		150	60		120							
	300	40	410	210	270	210	60	50	130	330	50	170	200	45	60	135	360	370	140	380	350	50	100	15	16
		60		230								160	220		150	60		120							



Order CSKCA 65-00-40  
CSKC 100-00-40

## CSKCA/CSKC 400,500,600



### Product Codes

CSKCA: Dowel pin hole finished  
CSKC: Dowel pin prepared hole

### Mounting Bolt

Cam Base : M20  
Cam Driver : M16

### Mounting Method

N : Pin hole (Ø16 H7)

Cataloge No.	Working Face Width	Stroke	L	L1	B	B1	B2	B3	B4	K
CSKCA CSKC	400	60	356	320	525	200	445	485	300	Ø16
	500	60	361	320	625	200	545	585	300	Ø16
	600	60	361	320	725	300	645	685	400	Ø16



Order CSKCA400-00-60-K



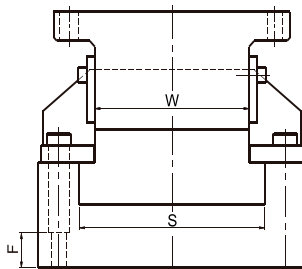
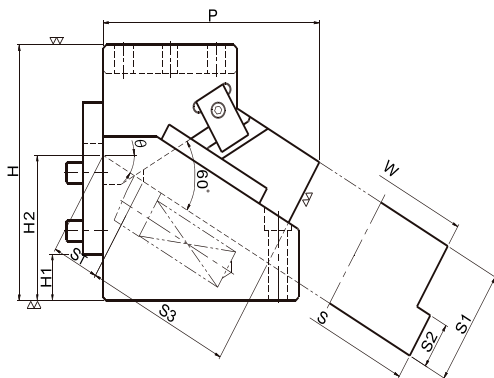
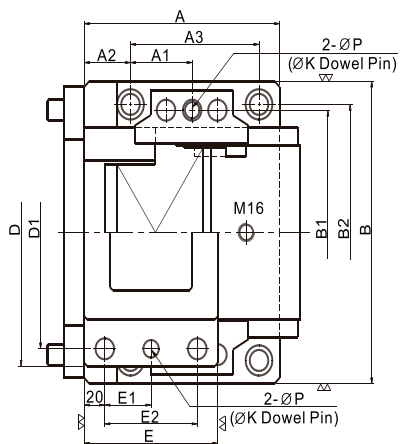
■ **Product Codes**

CSKCA: Dowel pin hole finished  
 CSKC: Dowel pin prepared hole

■ **Mounting Method**

N : Pin hole ( $\varnothing$ K H7)

## CSKCA/CSKC 65,100,150



Cataloge No.	Working Face Width	Stroke	$\theta$	P	B	H	D	D1	S	S1	S2	S3	H1	H2	B1	B2	A	A1	A2	A3	E	E1	F				
CSKCA CSKC	65	45	5	150.55	130	160	130	105	80	70	30	100	12.5	55	105	105	145	50	30	100	100	30	20				
			10	154.95									20	65										49			
			15	158.18		25							75	50													
			20	160.20		30							85														
		70	5	195.38	130	170	130	105	80	70	30	120	25	65	105	105	180	25	40	125	95	28	100	30	20		
				10										199.27												40	75
				15		201.64								40												85	
				20		202.48								40												95	
	100		45	5	172.22	175	200	165	140	120	90	40	120	27.5	68	140	150	160	50	40	105	95	28	100	30	25	
				10	178.12									30	75												100
				15	182.67									32.5	82												105
				20	185.83									35	90												110
		70	5	207.08	175	200	165	140	120	90	40	130	30	68	150	150	190	25	45	130	115	38	120	40	25		
			10	212.59									30	80												120	
			15	216.48									35	92												125	
			20	208.05									45	105												130	
	150	45	5	193.01	260	220	230	200	180	100	40	140	30	75	210	220	190	60	45	125	105	33	110	35	30		
			10	199.55									40	85												110	
			15	204.58									40	95												115	
			20	208.00									40	105												120	
		70	5	217.92	260	220	230	200	180	100	40	140	40	70	210	220	200	75	45	135	125	43	130	45	30		
			10	224.17									40	90												130	
			15	228.73		55							103	135													
			20	231.54		55							115	140													

### ■ Mounting Bolt & Dowel Pin

Catalog No.	Working Face (W)	P	K	Bolt
CSKCA CSKC	65	9	10	10
	100	11	12 or 13	12
	150	15	16	16



Order CSKCA65-20-45  
CSKC 65-10-70