



Working Face (Option)

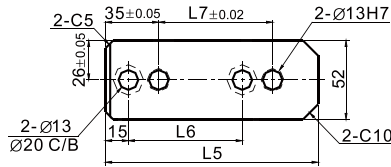
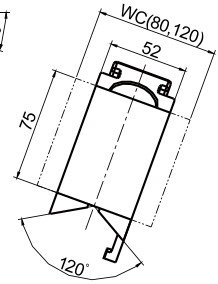
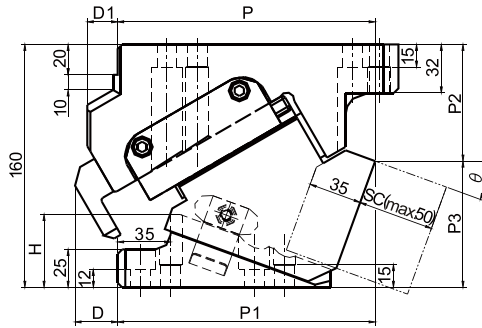
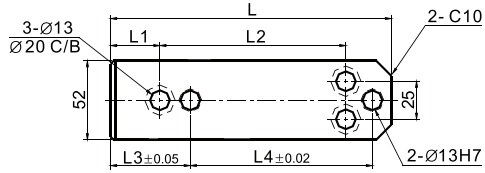
Blank : As drawing

SC : The mount surface is extended forward in the range of from 5 to 50 mm

(At a increments of 5 mm)

WC : The mount width is changed to 80/120 mm.

CSACD 52



| Catalog No. | Working Face (W) | Stroke (ST) | θ | P | P1 | P2 | P3 | D | D1 | L | L1 | L2 | L3 | L4 | L5 | L6 | L7 | H |
|-------------|------------------|-------------|----|--------|--------|--------|--------|-------|----|-----|------|-------|------|-----|-----|----|----|------|
| CSACD | 52 | 30.2 | 0 | 160.00 | 125.00 | 42.00 | 118.00 | 35 | 20 | 175 | 27.5 | 117.5 | 47.5 | 115 | 125 | | | 41 |
| | | 33.4 | 5 | 161.10 | 136.10 | 53.31 | 106.69 | 25 | | | | | | | | | | 40 |
| | | 36.6 | 10 | 159.28 | 144.28 | 62.11 | 97.89 | 15 | 25 | 75 | 32.5 | 122.5 | 52.5 | 120 | 130 | 75 | 75 | 42 |
| | | 39.9 | 15 | 168.99 | 151.49 | 66.32 | 93.68 | 17.5 | 20 | | | | | | | | | 49 |
| | | 43.3 | 20 | 169.72 | 169.72 | 76.86 | 83.14 | 0 | 18 | 185 | 37.5 | 117.5 | 57.5 | 115 | 140 | 60 | 60 | 48 |
| | | 47.0 | 25 | 168.92 | 168.92 | 78.63 | 81.37 | -13 | 18 | | | | | | | | | 55 |
| | | 51.0 | 30 | 166.59 | 166.59 | 85.55 | 74.45 | -17.5 | 17 | 10 | 47.5 | 107.5 | 67.5 | 105 | 115 | 60 | 60 | 63 |
| | | 55.4 | 35 | 163.72 | 163.72 | 92.52 | 67.48 | -30 | 16 | | | | | | | | | 68 |
| | | 60.4 | 40 | 163.80 | 173.80 | 98.47 | 61.53 | -10 | 10 | - | 75 | 105 | 75 | 105 | 115 | 60 | 60 | 70 |
| | | 66.2 | 45 | 157.35 | 180.35 | 104.78 | 55.22 | -23 | 10 | | | | | | | | | 78.5 |
| | | 73.1 | 50 | 159.37 | 174.37 | 103.89 | 56.11 | -15 | 10 | - | 75 | 105 | 75 | 105 | 115 | 60 | 60 | 93 |
| | | 64.5 | 55 | 152.53 | 182.53 | 111.09 | 48.91 | -30 | 10 | | | | | | | | | 93 |
| | | 54.0 | 60 | 142.95 | 157.95 | 113.10 | 46.9 | -15 | 10 | 93 | | | | | | | | |



Order CSACD52-15-WC120
CSACD52-15-SC15