



### Product Codes

CFCS : Standard type.  
CFCC/CFCCG : Changeable type(#500SP)

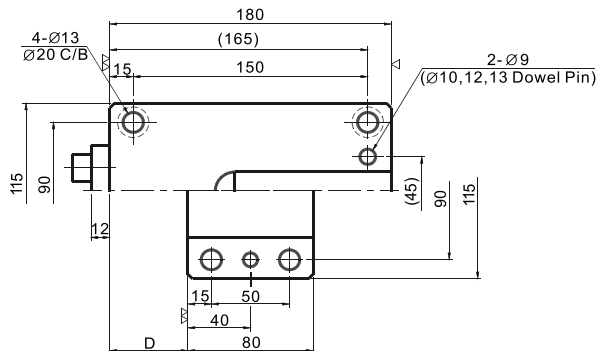
### Return Springs

CFCS/CFCC : With coil spring.  
CFCCG : With gas spring

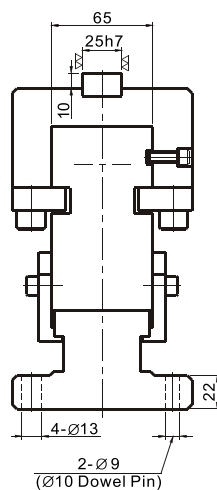
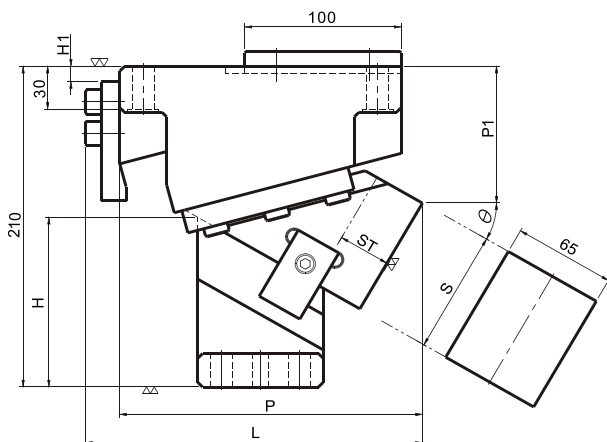
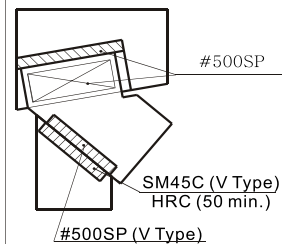
### Mounting Method

K : Key width 25mm assemble  
DK : Refer to below chart for Pin hole  
HK : Refer to below chart for Pin hole  
HDK : Refer to below chart for Pin hole

## CFCS/CFCC/CFCCG 65



## CFCC/CFCCG



Cataloge No.	Working Face Width	Stroke	θ	P	P1	S	D	L	H	H1		
										CFCS	CFCC(G)	
CFCS CFCC CFCCG	65	26	0	186.0	56.5	80	75	210.0	73.00	55	47	
		29	5	192.2	61.5		72	216.2	49.00		43	
		31	10	196.8	67.5		70	220.8	83.55	40	26	
		31	15	197.7	70.6		65	221.7	92.14	40.6		
		33	20	198.1	74.3		60	222.1	101.00	10	32	
		31	25	194.8	83.0		55	218.8	103.98			
		33	30	193.6	89.5		50	217.6	111.00		18	
		39	35	193.2	94.1		45	217.2	122.01		10	
		42	40	188.7	99.6	40	212.7	120.00	15	10		
		49	45	190.0	105.0	90	35		214.0	10	10	10
		54	50		110.0		3					
		43	55		112.5	100	25	1230.00				
		50	60		115.0		20					
		59	65	122.5	110	10	120.00					
		58	70	130.0		0	130.00					

Option	Cam Driver Fine Geinding (H7)	Cam Base Fine Geinding (H7)
DK	10,12,13	-
HK	-	10,12,13
HDK	10,12,13	10,12,13



Order

CFCS65-31-10  
CFCC65-31-15  
CFCCG65-33-30

\* N Option is used for the produc which inclined to 10 degree.

\* CFCC,CFCCG : Prepared pin hole.



### Product Codes

CFCS : Standard type.  
CFCC/CFCCG : Changeable type (#500SP)

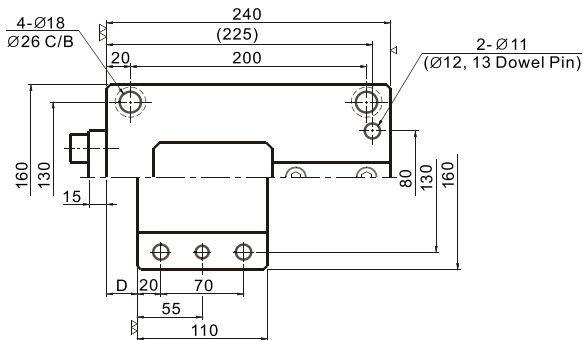
### Return Springs

CFCS/CFCC : With coil spring.  
CFCCG : With gas spring

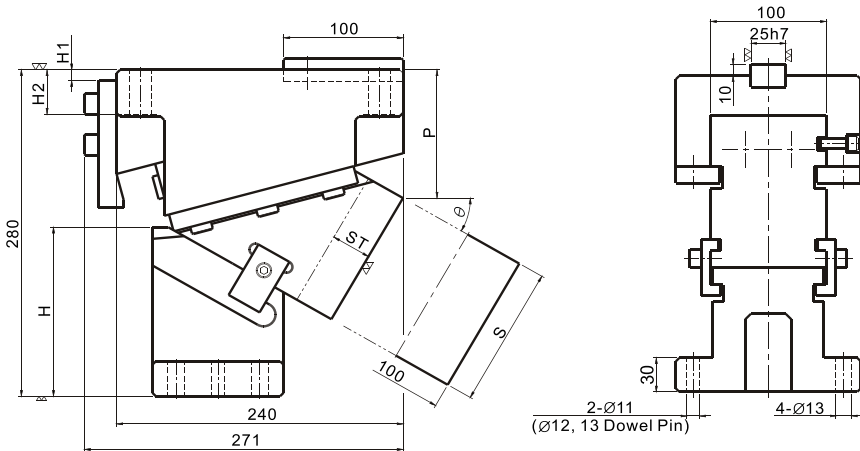
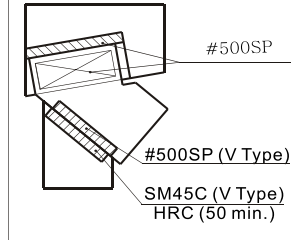
### Mounting Method

K : Key width 25mm assemble  
DK : Refer to below chart for Pin hole  
HK : Refer to below chart for Pin hole  
HDK : Refer to below chart for Pin hole

## CFCS/CFCC/CFCCG 100



## CFCC/CFCCG



Cataloge No.	Working Face Width	Stroke	$\theta$	P	S	D	H	H2	H1	
									CFCS	CFCC(G)
CFCS CFCC CFCCG	100	28	0	85	100	60	95	38	55	55
		30	5	88			106		67	67
		33	10	90			110		35	35
		28	15	100		126	52		52	
		30	20	110		125	15		15	
		31	25	100	120	40	150		30	15
		33	30	110		30	155		10	10
		36	35	113	150		21.5		21.5	
		39	40	115	140		20		160	10
		42	45			10	165			
		46	50	120		5	155			
		52	55	130		0	175			
		60	60	145		170				
		59	65							
		58	70							

Option	Cam Driver Fine Geinding (H7)	Cam Base Fine Geinding (H7)
DK	12,13	-
HK	-	12,13
HDK	12,13	12,13



Order  
 CFCS100-30-20  
 CFCC100-33-30  
 CFCCG100-39-40

\* N Option is used for the produc which inclined to 10 degree.

\* CFCC,CFCCG : Prepared pin hole.



### Product Codes

CFCS : Standard type.  
CFCC/CFCCG : Changeable type (#500SP)

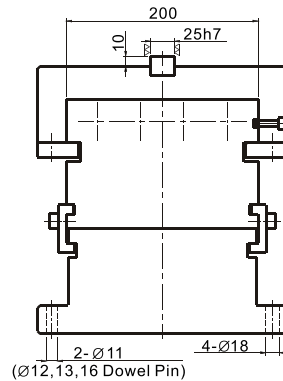
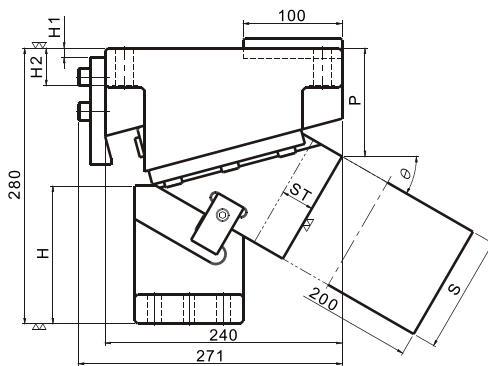
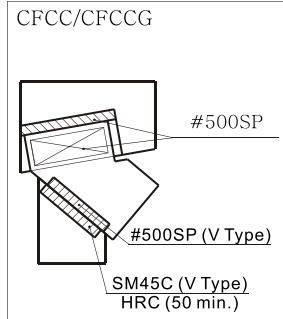
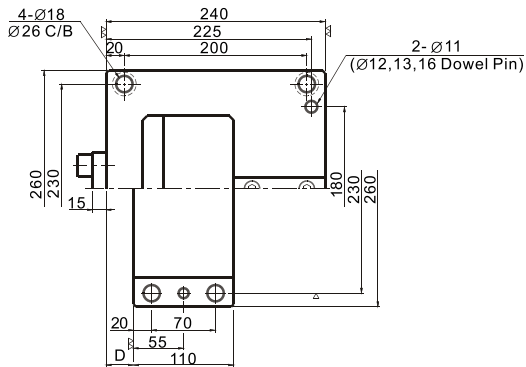
### Return Springs

CFCS/CFCC : With coil spring.  
CFCCG : With gas spring

### Mounting Method

K : Key width 25mm assemble  
DK : Refer to below chart for Pin hole  
HK : Refer to below chart for Pin hole  
HDK : Refer to below chart for Pin hole

## CFCS/CFCC/CFCCG 200



Cataloge No.	Working Face Width	Stroke	$\theta$	P	S	D	H	H2	H1		
									CFCS	CFCC(G)	
CFCS CFCC CFCCG	200	28	0	90	100	60	90	38	60	60	
		30	5				105		67	67	
		33	10				120		35	35	
		28	15	100		55	126		52	52	
		30	20			50	125		15	15	
		31	25			40			30	30	
		33	30	110	120	30	150		10	10	
		36	35				113		155	21.5	21.5
		39	40				115		160	10	10
		42	45	120	140	20	165	60	10	10	
		46	50				10				160
		52	55				133				5
		60	60	145		0	170				
		59	65				175				
		58	70								

Option	Cam Driver Fine Geinding (H7)	Cam Base Fine Geinding (H7)
DK	12,13,16	-
HK	-	12,13,16
HDK	12,13,16	12,13,16



Order CFCS200-33-10  
CFCC200-30-20  
CFCCG200-46-50

- \* N Option is used for the product which inclined to 10 degree.
- \* CFCC,CFCCG : Prepared pin hole.



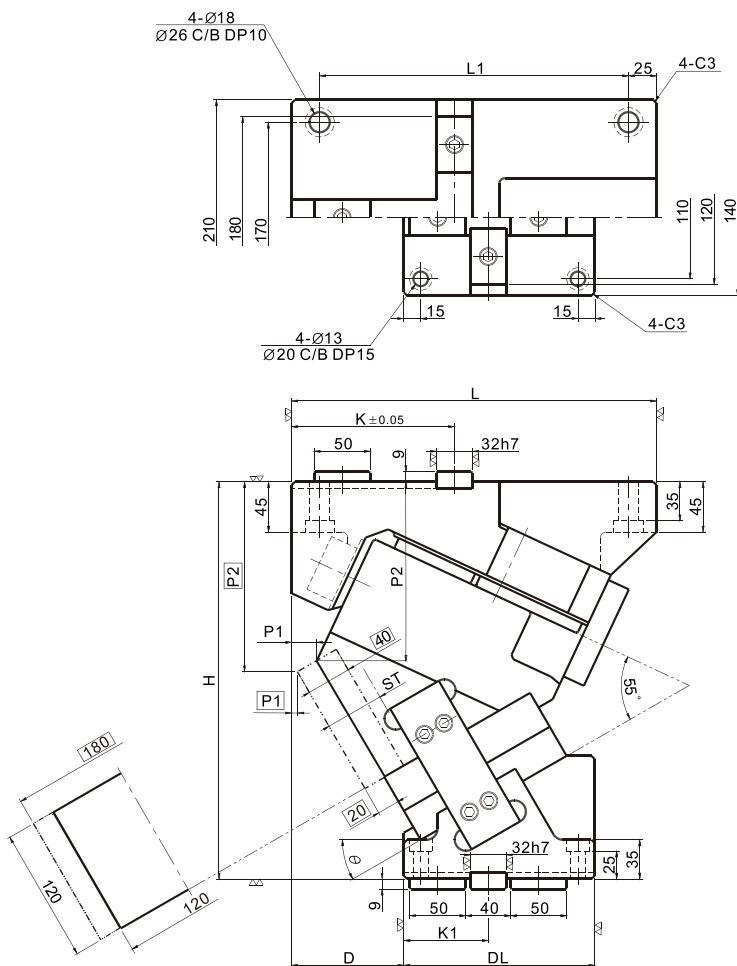
### Return Springs

CFCC : With coil spring.(#500SP)  
 CFCCG : With gas spring (#500SP)

### Working face width

120mm : Drawing shape  
 180mm :  Dimension

## CFCC/CFCCG 120,180



Catalog No.	Working Face (W)	Stroke (ST)	$\theta$	P1	P2	K1	DL	H	D	K	L	L1
CFCC CFCCG	120	28	0	10.00	115.01	75	170	340	-5	175	290	240
		35	10	13.50	137.82			360	35		315	265
		39	15	19.30	146.31			50	165	305	255	
		52	30	22.50	159.78			355	100	145	325	275
		63	40	51.08	188.29	90	180	365	155	175	350	300
		69	45	69.18	204.18			370	165	125	355	305
		77	50	73.28	216.10			200	350		300	
		99	60	79.78	242.50	75	170	370	220	110	345	295



Order CFCC120-52-30  
CFCCG120-63-40

Catalog No.	Working Face (W)	Stroke (ST)	$\theta$	P1	P2	K1	DL	H	D	K	L	L1
CFCC CFCCG	180	28	0	-10.00	115.00	75	170	340	-5	175	290	240
		35	10	-6.20	141.29			360	35		315	265
		39	15	0.00	151.48			50	165	305	255	
		52	30	5.17	169.78			355	100	145	325	275
		63	40	35.76	201.15	90	180	365	155	175	350	300
		69	45	55.04	218.32			370	165	125	355	305
		77	50	60.42	231.42			200	350		300	
		99	60	69.78	259.82	75	170	370	220	110	345	295



Order CFCC180-52-30  
CFCCG180-63-40